

700Fs

TFT-LCD Color Monitor

17



Hansol Electronics Inc.



Printed on the recyclable paper
Printed in Korea
Part No. 942227020001-01

www.hansolel.co.kr

Table of Contents

Parts	3
Connection to Computer	4
How to Adjust Monitor Angle	6
Installing Monitor Driver	7
Power Management Feature	9
Name and Function of Front	10
Adjusting OSD	12
Installing VESA stand and USB	20
Installing Option Stand	21
Standard Signal Table	22
Specification	23
Troubleshooting	24
Warning	26

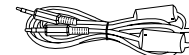
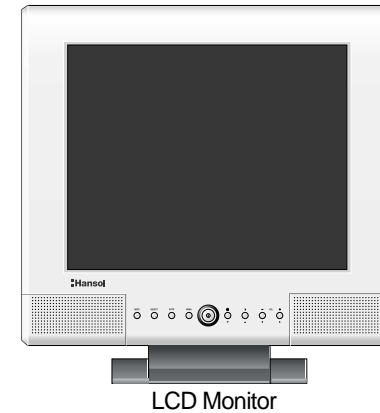
Good Posture Guide

- ◆ Place the monitor to face the user and then adjust the monitor angle.
- ◆ Take a break (for about 10 minutes) at every hour during the work with monitor.
- ◆ Refer to the following figure to take the correct posture.

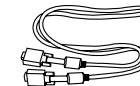


- Look down the monitor below the horizon.
- Adjust the monitor to prevent reflection.
- Relax shoulders and arms, and sit back on the chair.
- Adjust the monitor stand to acquire required angle.
- Maintain the arms horizontally and place hands softly on the keyboard.
- Keep feet flat on the ground.

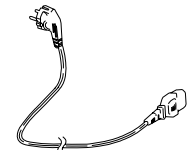
Parts



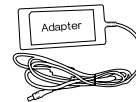
Stereo Cable



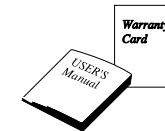
Signal Cable



AC Power Cable



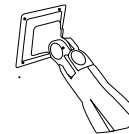
12V-DC Adapter



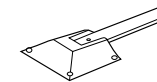
User's Manual /
Warranty Card



Installation Diskette



Arm

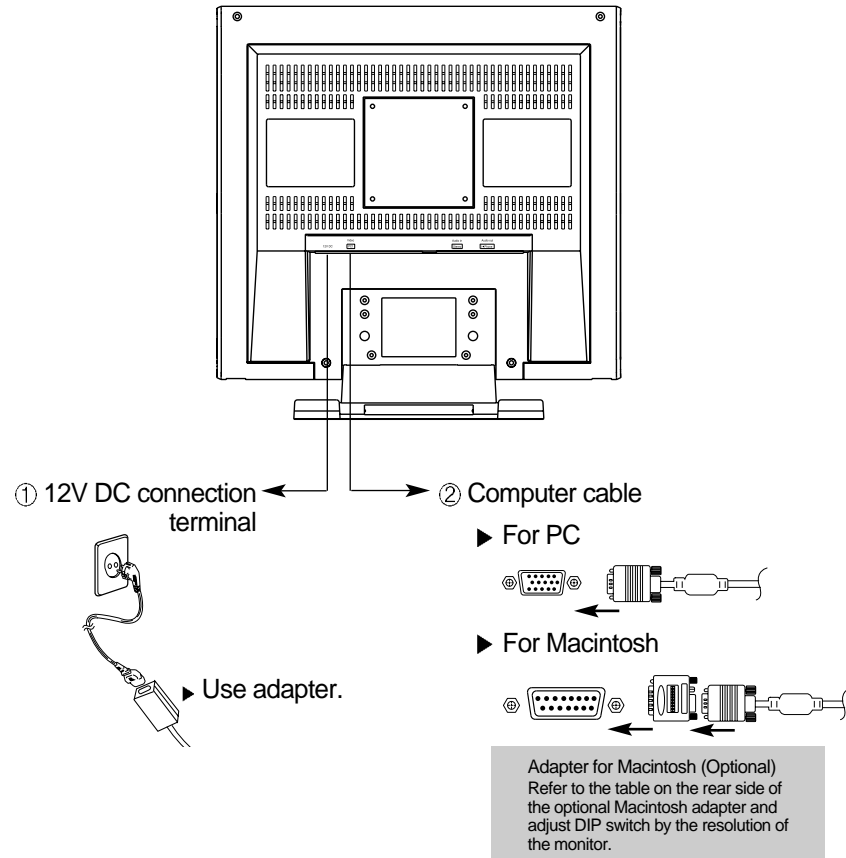


Option Stand

Arm and Option
Stand are optional.

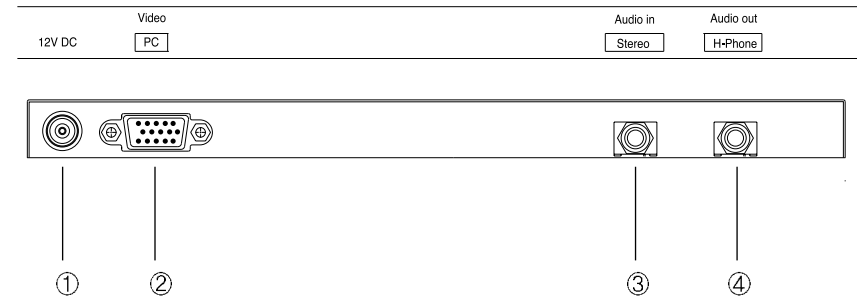
Connection to Computer

Basic Connection



1. Use 220 V or 110 V. (Free Voltage)
2. Connect monitor and computer via computer cable (See figure ②)
3. Switch on power to monitor and computer.
4. Installation is finished.

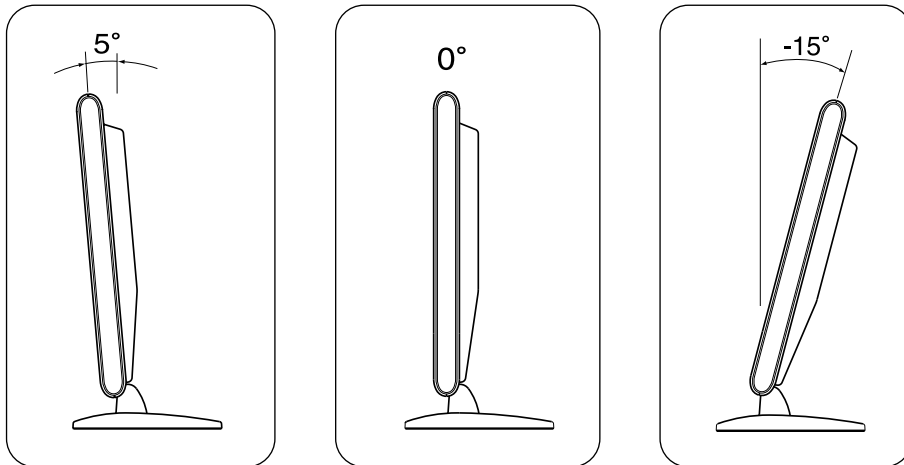
Applied Connection



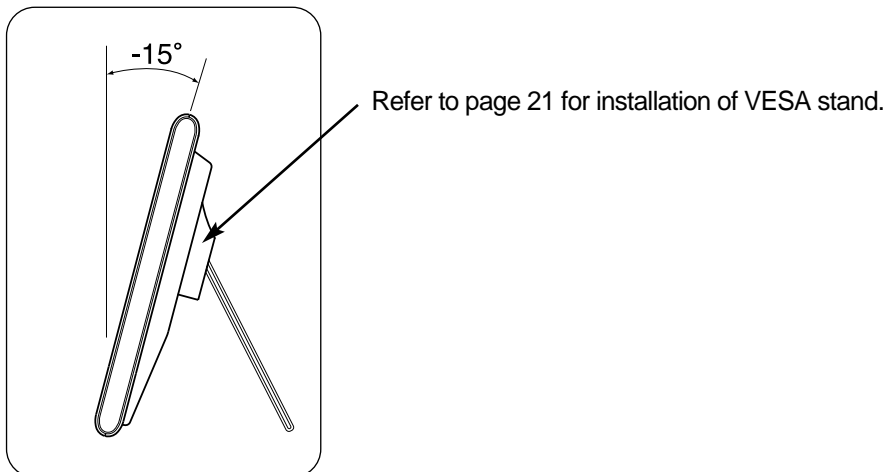
1. Connect the adapter to "12V DC" input terminal.
2. Connect the computer cable to PC.
3. Connect audio output to Audio In (Stereo).
4. Connect headphone or earphone to H-Phone terminal.

How to Adjust Monitor Angle

▼ How to Default Stand



▼ How to Option Stand



Installing Monitor Driver

Run (Click) Install at Floppy driver and select the product model to set the optimum display in Window 95, 98 or 2000.

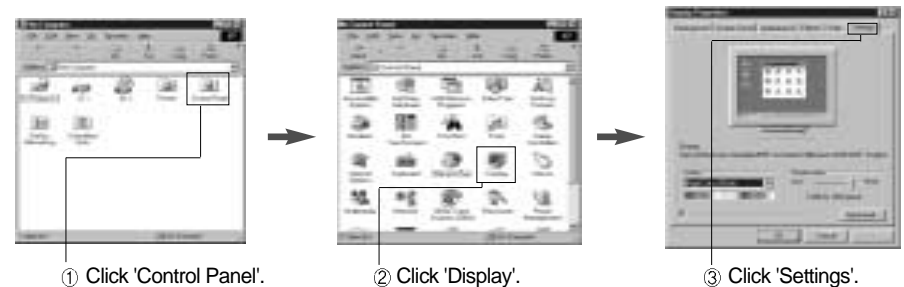
► Use the Driver Floppy provided.

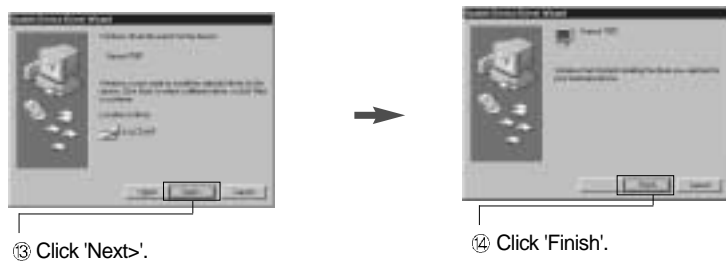
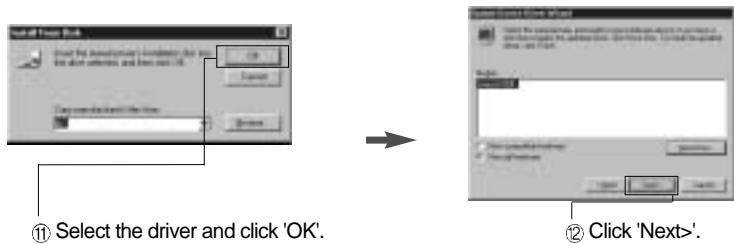
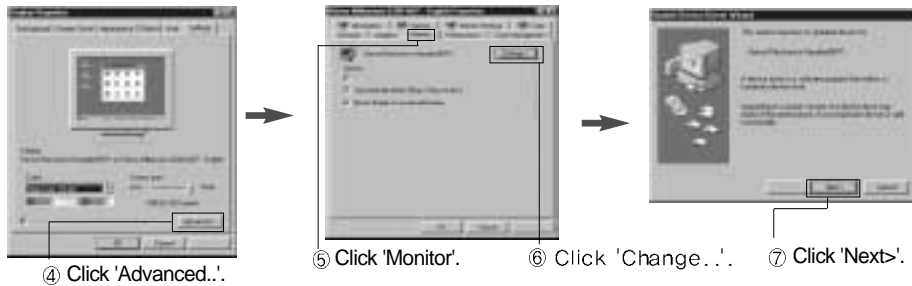
Automatic Installation

1. Insert the Diskette in the Floppy driver.
2. Double-click Install.exe in the Floppy driver folder using search function.
3. Select the model and click "OK".
4. Select inf file of the model in Floppy driver, and then click "OK" button.
5. Click "Exit" to close the installation.

Manual Installation

1. Insert the Diskette in the Floppy driver.
2. Click 'My Computer' and follow the procedure below.





3. Select Exit if the monitor model is changed, and then reboot Windows.

Power Management Feature

When not in use for a long period of time, the monitor automatically reduces its power consumption, meeting power saving standards of EPA and NUTEK.

The monitor is equipped with a power saving circuit that conforms to the world-standard Display Power Manager Signalling (DPMS) mode of Video Electronics Standard Association (VESA). The power management feature requires that the video card of the computer should support DPMS function.

Status	Color of LED	Power Consumption
Normal	Green	Normal Power
Power Cut Off	Amber/Blinking (2 second interval)	5 W or Below

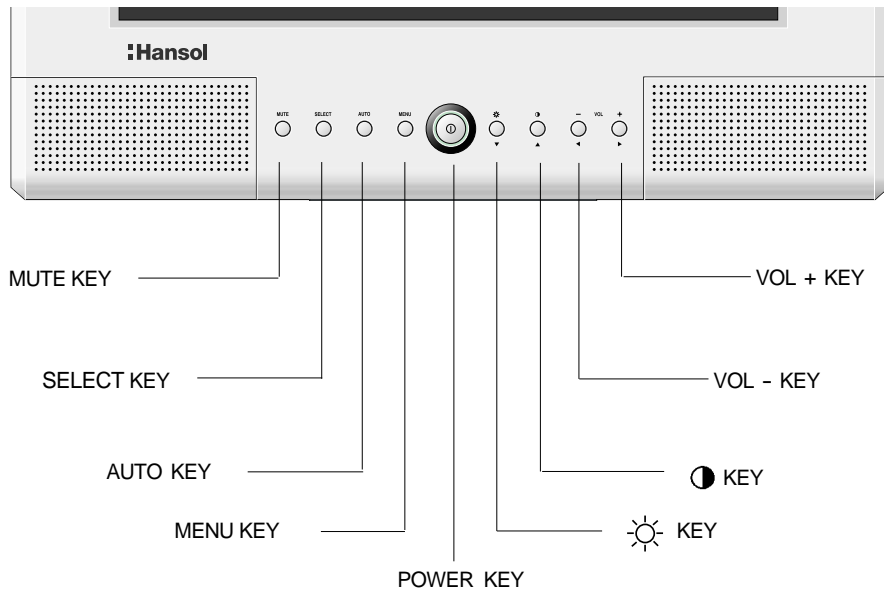
No image is displayed with LED blinking.
 Monitor is in power saving mode.
 Use mouse or keyboard to release power saving mode.

No image is displayed without LED on.
 Power cable plug must be pulled out.
 Check the power plugs on monitor and on the wall.

"Out of range" displayed on the screen.
 This message is displayed when the signal from video card exceeds the maximum frequency of the monitor. Readjust resolution and frequency in accordance with the monitor capacity. (Refer to Standard Signal Table)

Name and Function of Front

Front panel



Functions

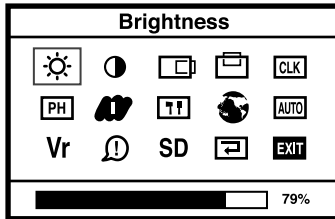
- ◆ **Power Switch**
Power switch is located in the lower center of the monitor stand.
You can push the switch to turn on/off the power.

- ◆ **Power Saving LED**
If the green LED around the power switch turns into blinking amber, it indicates the monitor is in power saving mode.
If the amber LED keeps blinking and input signal LED is blinking, it indicates the monitor does not support input video signal.

- ◆ **On Screen Display (OSD) Function Button**
OSD buttons on the front of the monitor perform the following functions.
 - MUTE : Cut off sound.
 - AUDIO : Sound control function.
 - AUTO : Press this button, when OSD is not displayed, to perform automatic setting.
 - MENU : Press this button to display menus.
 - POWER : Power switch.
 - ☀️ / 🌑 : Press this button when OSD is not displayed, You can adjust contrast or brightness. By pressing this button when OSD is displayed, You can adjust gauge or select item.
 - VOLUME : Press this button to adjust volume of audio when OSD is not displayed. By pressing this button when OSD is displayed, You can move the cursor into the menus which you want.

Adjusting OSD

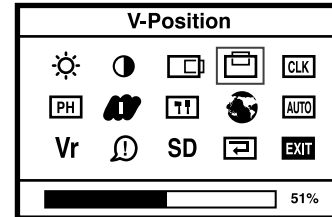
Brightness



MENU → ◀ VOL ▶ → ▼ ▲

1. Press the Menu button.
2. Use ◀ ▶ to select the Brightness ICON.
3. Use ▼ ▲ to adjust the brightness.

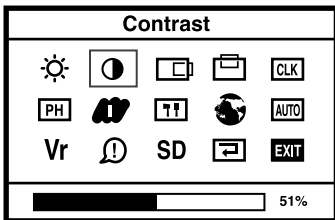
Vertical Position



MENU → ◀ VOL ▶ → ▼ ▲

1. Press the Menu button.
2. Use ◀ ▶ to select the V-Position ICON.
3. Use ▼ ▲ to adjust display upward or downward.

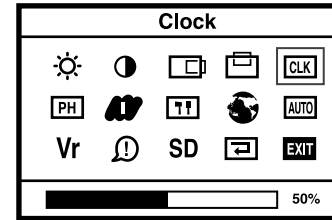
Contrast



MENU → ◀ VOL ▶ → ▼ ▲

1. Press the Menu button.
2. Use ◀ ▶ to select the Contrast ICON.
3. Use ▼ ▲ to adjust the contrast.

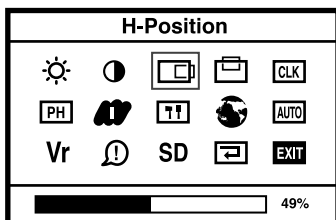
Clock



MENU → ◀ VOL ▶ → ▼ ▲

1. Press the Menu button.
2. Use ◀ ▶ to select the Clock ICON.
3. If Auto-config function fails to remove Video noise, Use ▼ or ▲ to remove vertical noise.
(Adjusting clock phase is required after the adjustment of clock.)

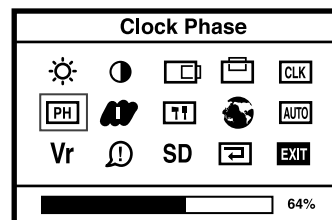
Horizontal Position



MENU → ◀ VOL ▶ → ▼ ▲

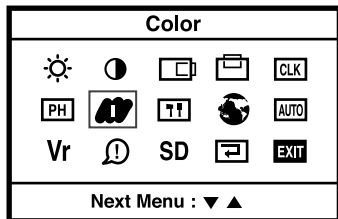
1. Press the Menu button.
2. Use ◀ ▶ to select the H-Position ICON.
3. Use ▼ ▲ to adjust display left or right.

Clock Phase



MENU → ◀ VOL ▶ → ▼ ▲

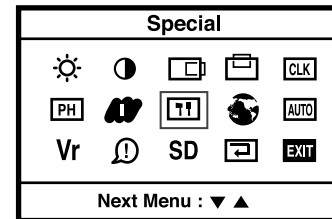
1. Press the Menu button.
2. Use ◀ ▶ to select the Clock Phase ICON.
3. Use ▼ ▲ to Correct fine trembling or Video noise.



Color

MENU → ◀ VOL ▶ → ▼ ▲

1. Press the Menu button.
2. Use ◀ ▶ to select the Color ICON.
3. Use ▼ ▲ into the submenu.



Special

MENU → ◀ VOL ▶ → ▼ ▲

1. Press the Menu button.
2. Use ◀ ▶ to select the Special ICON.
3. Use ▼ ▲ into the submenu.

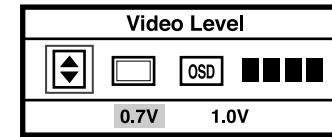


Preset Color

◀ VOL ▶ → MENU

1. Use ◀ ▶ to select the I or II.
2. Press the Menu button to exit.

I : Blue tone II : Default color



Video Level

◀ VOL ▶ → ▼ ▲ → MENU

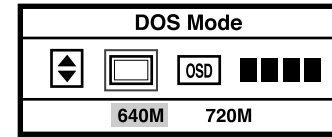
1. Use ◀ ▶ to select the Video Level.
2. Use ▼ ▲ to adjust level.
3. Press the Menu button to exit.



User Color

◀ VOL ▶ → ▼ ▲ → MENU

1. Use ◀ ▶ to select Red, Green, Blue.
2. Use ▼ ▲ to increase or decrease each color.
3. Press the Menu button to exit.

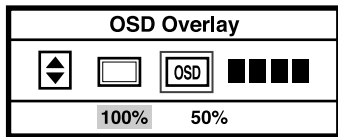


DOS Mode

◀ VOL ▶ → ▼ ▲ → MENU

1. Use ◀ ▶ to select the DOS Mode.
2. Use ▼ ▲ to select Mode.
3. Press the Menu button to exit.

OSD Overlay



◀ VOL ▶ → ▼ ▲ → MENU

1. Use ◀ ▶ to select the OSD Overlay.
2. Use ▼ ▲ to adjust OSD Overlay.
3. Press the Menu button to exit.

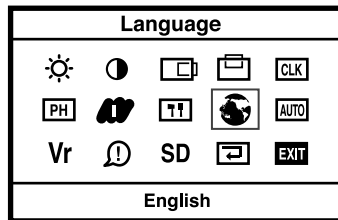
Sharpness



◀ VOL ▶ → ▼ ▲ → MENU

1. Use ◀ ▶ to select the Sharpness.
2. Use ▼ ▲ to adjust Sharpness.
3. Press the Menu button to exit.

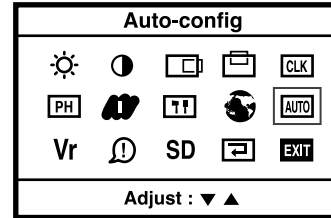
Language



MENU → → ◀ VOL ▶ → ▼ ▲

1. Press the Menu button.
2. Use ◀ ▶ to select the Language.
3. Use ▼ ▲ to select language in order.

Auto-Config



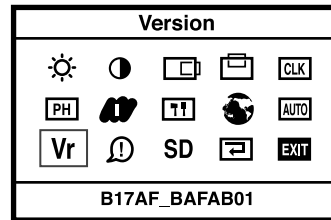
MENU → → ◀ VOL ▶ → ▼ ▲

1. Press the Menu button.
2. Use ◀ ▶ to select the Auto-Config.
3. Use ▼ ▲ to readjust the display condition.

In most cases, Auto-Config adjusts display appropriately. Use PH or adjust CLK in accordance with graphic card to fine tune the display.



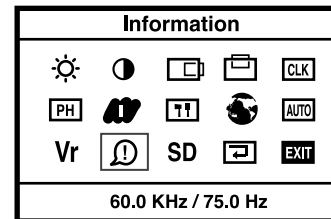
Version



MENU → → ◀ VOL ▶

1. Press the Menu button.
2. Use ◀ ▶ to select the Version.
3. Check the version.

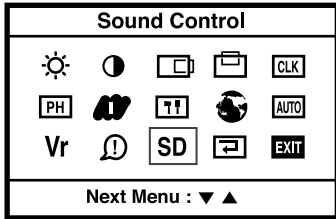
Information



MENU → → ◀ VOL ▶

1. Press the Menu button.
2. Use ◀ ▶ to select the Information.
3. You can know a display information (Horizontal, Vertical Frequency)

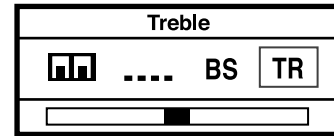
Sound Control



MENU → ◀ VOL ▶ → ▼ ▲

1. Press the Menu button.
2. Use ◀ ▶ to select the Sound Control.
3. Use ▼ ▲ into the submenu.

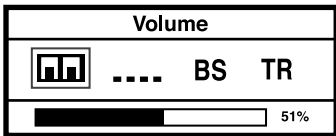
Treble



◀ VOL ▶ → ▼ ▲ → MENU

1. Use ◀ ▶ to select the Treble.
2. Use ▼ ▲ to adjust treble.
3. Press the Menu button to exit.

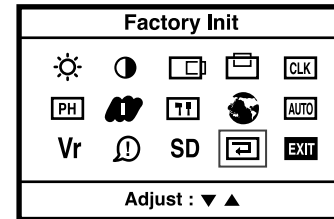
Volume



◀ VOL ▶ → ▼ ▲ → MENU

1. Use ◀ ▶ to select the Volume.
2. Use ▼ ▲ to adjust volume.
3. Press the Menu button to exit.

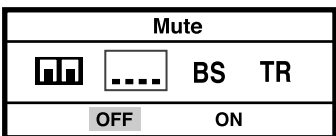
Factory Init



MENU → ◀ VOL ▶ → ▼ ▲

1. Press the Menu button.
2. Use ◀ ▶ to select the Factory Init.
3. Use ▼ ▲ to return default setting.

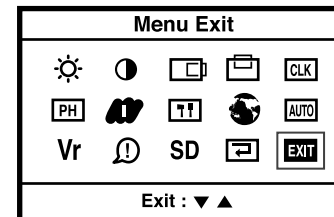
Mute



◀ VOL ▶ → ▼ ▲ → MENU

1. Use ◀ ▶ to select the Mute.
2. Use ▼ ▲ to select OFF/ON.
3. Press the Menu button to exit.

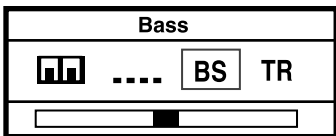
Menu Exit



MENU → ◀ VOL ▶ → ▼ ▲

1. Press the Menu button.
2. Use ◀ ▶ to select the Menu Exit.
3. Use ▼ ▲ to exit menu.

Bass

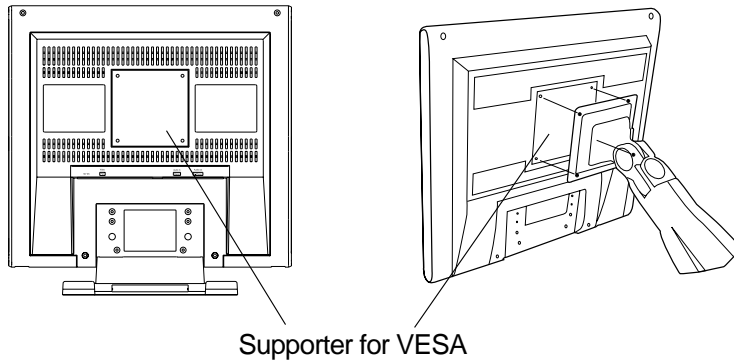


◀ VOL ▶ → ▼ ▲ → MENU

1. Use ◀ ▶ to select the Bass.
2. Use ▼ ▲ to adjust bass.
3. Press the Menu button to exit.

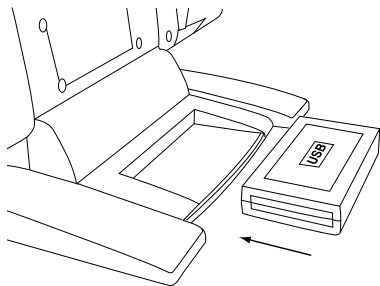
Installing VESA and USB

Installing VESA Stand



Arrange the VESA stand on supporter and fix with four screws.

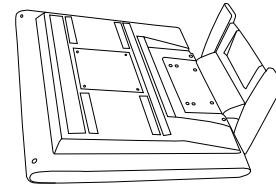
Installing USB (Optional)



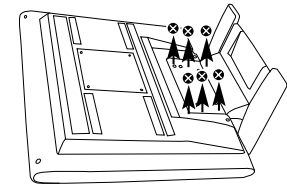
Install USB in the designated location in the rear side of the stand.
(Use dedicated USB from Hansol Electronics only.)

Installing Option Stand

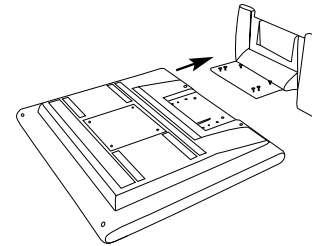
The monitor is available for various VESA standard stands.
Follow the following instruction for VESA stand.



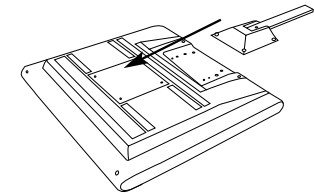
1. Place the monitor with its LCD panel on the flat ground covered with cushion or soft cloth.



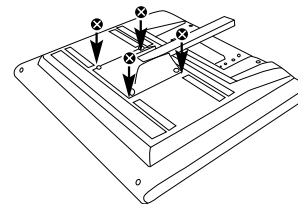
2. Unscrew six screws.



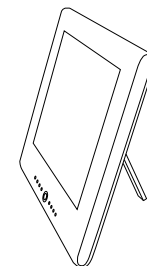
3. Disassemble the stand.



4. Locate the option stand on the supporter.



5. Tighten four screws.



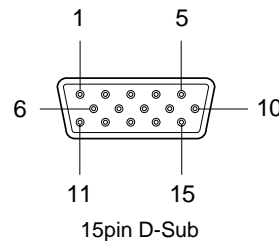
6. Stand the monitor and spread out the stand bar.

Standard Signal Table

Resolution	Horizontal Frequency (KHz)	Vertical Frequency (Hz)	Clock Frequency (MHz)
VGA (720 X 400)	31.469	70.087	28.322
VGA (640 X 480)	31.469	59.940	25.175
VGA (640 X 480)	37.500	75.000	31.500
SVGA (800 X 600)	46.875	75.000	49.500
XGA (1024 X 768)	48.363	60.004	65.000
XGA (1024 X 768)	60.023	75.029	78.750
SXGA (1280 X 1024)	63.981	60.020	108.000
SXGA (1280 X 1024)	79.976	75.025	135.000
MAC (640 X 480)	35.000	66.667	30.240
MAC (832 X 624)	49.726	74.551	57.284
MAC (1152 X 870)	68.681	75.062	100.000

Pin assignment table D-Sub Mini 15pin connector

Pin No.	Assignment	Pin No.	Assignment
1	Red Video	9	N.C
2	Green Video	10	Ground
3	Blue Video	11	Ground
4	N.C	12	SDA
5	Ground	13	H.Sync
6	Red Video Ground	14	V.Sync
7	Green Video Ground	15	SCL
8	Blue Video Ground		



Specification

Model	700Fs	
LCD Panel	Type	Amorphous active matrix super TFT LCD
	Screen Size	43.18cm (Diagonal)
	Maximum Resolution	1280 X 1024@75 Hz
	Pixel Range	0.264 mm X 0.264 mm
	Maximum Colors	16.7 M
	Contrast Rate	350 : 1
	Visual Angle	80° / 80° / 80° / 80° (Left / Right / Up / Down)
	Response Speed	35 ms
	Brightness	200 cd/m2
	Synchro nization	Horizontal Frequency
Vertical Frequency		75 Hz (Max.)
Video Input	Video Signal	Analog RGB (0.714 Vpp)
	Synchronous Signal Mode	H, V Separate TTL Sync, SOG, COMPOSITE
Power Consumption	Maximum	47 W
	Power Saving Mode	Under 5 W
Control key	Front Part	MUTE, AUDIO, AUTO, MENU, VOL ,POWER, , SWITCH
Power Adapter	Input: 100/240V (50~60 Hz), Output: 12V, 4.58A, 55W	
Multi-Media	Audio	3 Watt Speaker X 2 (Max.)
	Wall Mount	VESA Standard
Safety Standard & EMI	Safety Standard	UL, CE, TUV, CB
	EMI	FCC
	Low Radiation	MPR-II, TCO95, TCO99(Optional)
Dimension	Size and Weight	435 X 448 X 197 / 6.0 Kg

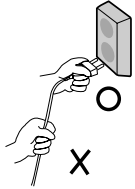
Troubleshooting

Power LED is off. No picture.	▷ <ul style="list-style-type: none">• Check the power connection. (Refer to page 4)
Message, "No signal." is displayed on the screen.	▷ <ul style="list-style-type: none">• Check the computer connection cable. (Refer to page 4)• Check if computer power is on.
Screen looks to be run down.	▷ <ul style="list-style-type: none">• Check the signal cable between monitor and computer. (Refer to page 4)• Perform AUTO config.
Screen is not clear.	▷ <ul style="list-style-type: none">• Perform Clock and Adjust PHASE.• Switch off/on the monitor.• Remove accessories (Video extension cable and others) and switch on.
Display is unstable and trembling.	▷ <ul style="list-style-type: none">• Check the resolution and frequency of computer and video card, and set up the again in reference to the current monitor mode and standard signal mode table.

Color is irregular.	▷ <ul style="list-style-type: none">• Adjust COLOR at User Mode in OSD Color Menu.
Double images or 'ghosts'.	▷ <ul style="list-style-type: none">• Check the resolution and frequency of computer and video card, and set up a gain in reference to the current monitor mode and standard signal mode table.
Picture is dark.	▷ <ul style="list-style-type: none">• Adjust COLOR at User Mode in OSD Color Menu.
Picture is biased or cut or too wide.	▷ <ul style="list-style-type: none">• Perform Auto-Config.
Power LED turns into amber or blinking amber.	▷ <ul style="list-style-type: none">• Monitor is in power saving mode.
No sound.	▷ <ul style="list-style-type: none">• Check the voice signal connection code or adjust volume.
Dead sound.	▷ <ul style="list-style-type: none">• Adjust BASS and TREBLE.

Warning

To prevent damage or loss, please read this warning carefully.



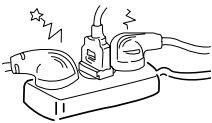
- When connecting/disconnecting the plug, pull out the plug itself, and never pull the plug to prevent fire caused by short.



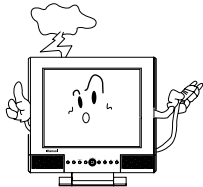
- To prevent electric shock, do not connect/disconnect the plug with wet hand.



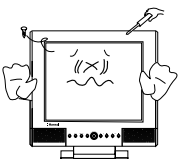
- If you see smoke or smell something burning, stop using the unit, switch off the power, pull out the plug, and then contact your local service station.



- To prevent fire, do not connect a large number of equipment in a single line.



- To prevent fire and electric shock, pull out the plug in case of thunder and lightning.



- To prevent fire and electric shock, do not try to take the monitor apart or repair it yourself. Contact your local service station or customer service center for inspection, modification or repair.

Memo